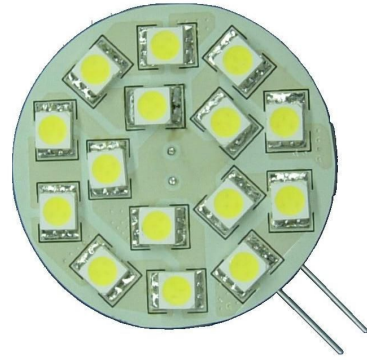




LUMENSOURCE

WAFER 15 SERIES

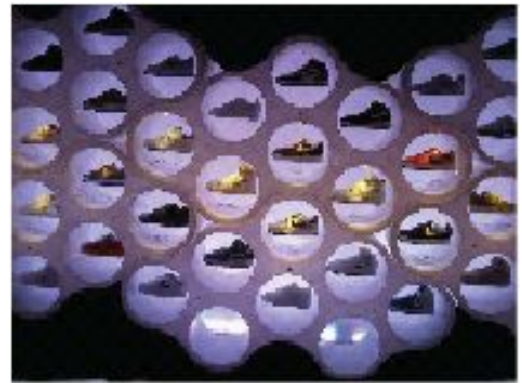
The high brightness Wafer uses only 3W compared to a 35W traditional halogen light source. The bi-pin fits into any G4 size fixture socket providing high performance, energy saving, and long lasting light output. Available in back pin and side pin mount.



Side pin mounting Wafer

SPECIFICATIONS

Wattage	3W
Voltage	12V AC/DC
Average Lifetime	> 50,000 hrs
Colors	Warm White (3,000K)
Luminous Flux	210 lm (W)
Beam Angle	180 degrees
Dimensions	1.75" dia / 0.5" length
Dimmability	Magnetic Low Voltage Dimmer
LED	15



ORDERING INFO

- Side pin
WF-15S-X

W – Warm White

