

# LUMENSOURCE



## FLOOD LIGHT 50W RGB SERIES

The LED flood light uses only 50W compared to a 150W traditional metal halide light source. The flood light will have mounting bracket that can be screwed to any indoor or outdoor location that requires a high performance, energy saving, and long lasting light output. The flood light changes colors using remote control. Preset programs are also available for automatic settings.

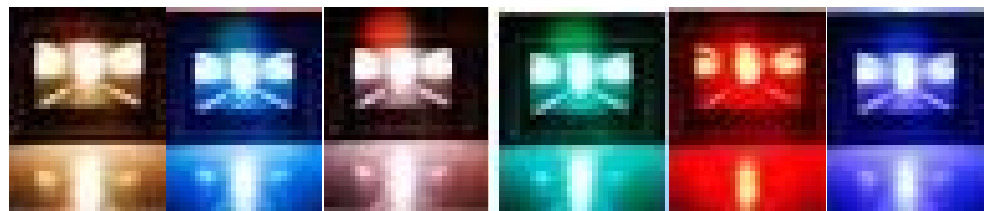
## SPECIFICATIONS

|                  |                                            |
|------------------|--------------------------------------------|
| Wattage          | 50W                                        |
| Voltage          | 120V AC                                    |
| Average Lifetime | > 50,000 hrs                               |
| Colors           | Warm White (3,000K)<br>Cool White (5,000K) |
| Luminous Flux    | 1,803 lm (W); 2,232 lm (C)                 |
| Beam Angle       | 120 degrees                                |
| Dimensions       | 11.3"L x 9.3"W x 7"H                       |
| LED              | 50                                         |



## ORDERING INFO

- FEL-50-RGB



UNIT:mm

